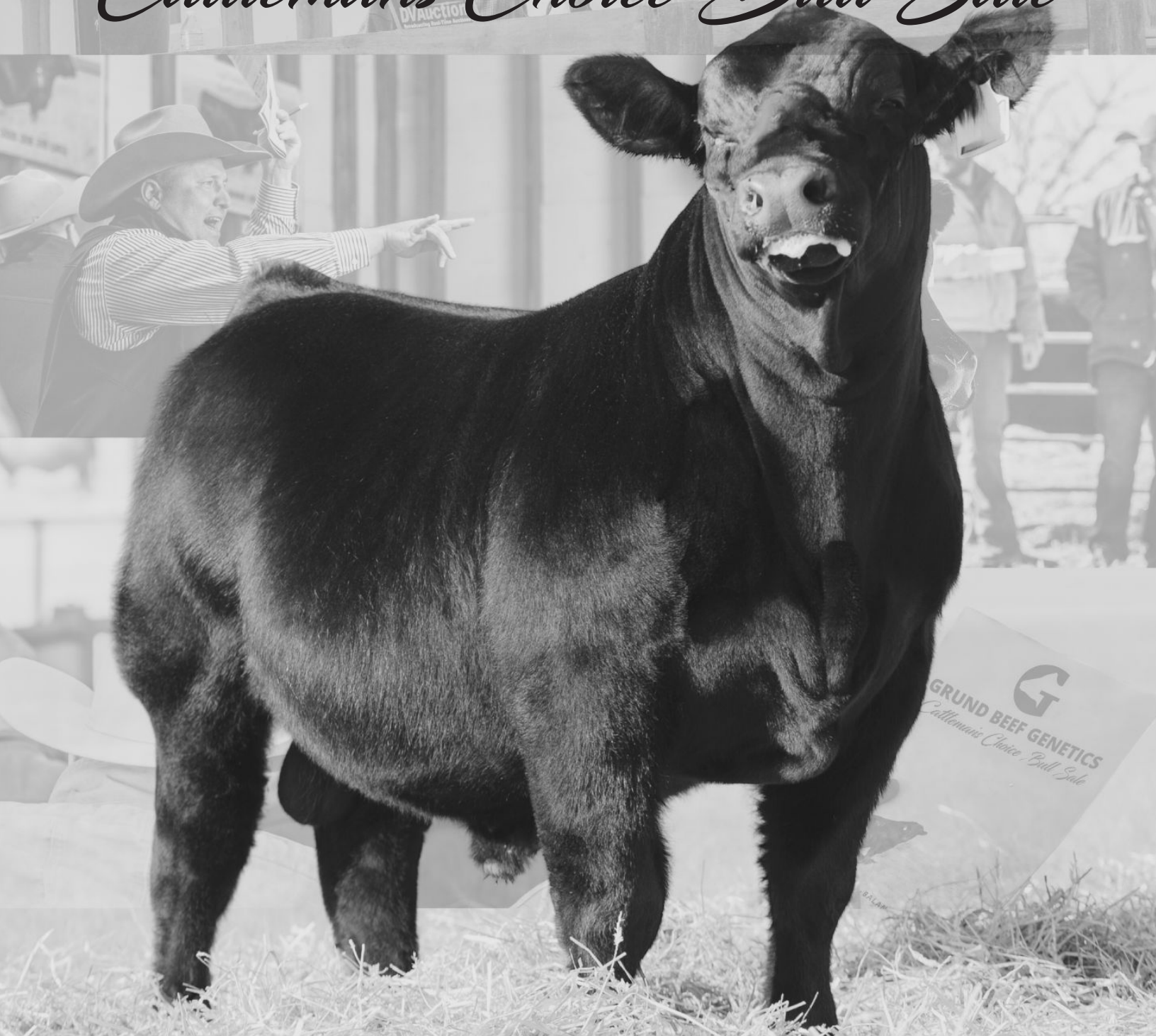




GRUND BEEF GENETICS

Cattlemen's Choice Bull Sale



FEBRUARY 26 • SHARON SPRINGS, KS • 1 PM MTN



Location

AT THE RANCH
302 Ash St.
Sharon Springs, KS 67758
Directions on page five.



Schedule

LUNCH - 11:30 AM MTN
SALE - 1 PM MTN
Call anytime to view bulls prior to sale.





WELCOME TO OUR 33RD ANNUAL PRODUCTION SALE.

For over 40 years, we've had the privilege of supplying genetics to cattlemen across the country, forging lasting relationships with ranchers who share our commitment to quality. We love working with our customers—learning about their operations, discussing their needs, and helping them succeed. The cattle market remains strong, driven by **EXCEPTIONAL** beef demand, and we're proud to contribute to that success with genetics that deliver real results.

At **Grund Beef Genetics**, we want to be more than just your bull supplier—we aim to be a trusted partner in your operation. We believe in **CROSSBREEDING** because hybrid vigor is **REAL**. Why not add **40 more pounds** to your calf crop, increase fertility rates by 3%, and improve cow longevity—all leading to **MORE PROFIT** in your pocket? The proof is in the data: our customers consistently top feeder calf sales and collect premiums on the rail.

We don't just sell bulls—we run a commercial cowherd alongside our seedstock program, ensuring our genetics work in real-world conditions. As a Top Dollar Angus genetic provider, we stand behind our cattle's performance. Over the past eight years, we've fed out our own cattle, averaging 98% Choice or higher and an impressive 64-65% dressing percentage. In 2024, our average carcass weight hit 960 pounds—because carcass weight drives **PROFIT** more than any other trait. If you're buying bulls from an operation that doesn't feed out their own cattle, how do they know their genetics truly perform?

But at Grund Beef Genetics, it all starts with the **FEMALE**. The most important profitability trait in the beef industry is **FERTILITY**, and we take that seriously. Once again, our cowherd ranks among the Top 15 breeders in the U.S. for **DAM OF MERIT** females—a recognition earned by cows in the top 5% of the breed for **FERTILITY** and **PRODUCTION** records.

Our genetics are making an impact nationwide. Bulls like Just N Time and Early Encounter rank among the Top 20 AI sires in the breed, proving that our breeding decisions create **RESULTS**. With deep industry connections, we are always happy to help align you with programs that maximize your **PROFITABILITY**.

NEW to this year is a volume discount on bulls. The details of the volume discount can be found on page 21. We continue to offer our sight-unseen purchase program with details found in the catalog. All bulls will be videoed and available for viewing at www.grundbeefgenetics.com and www.dvauction.com.

Join us for an open house to preview the bulls on February 22nd & 23rd—details will be posted on our Facebook page. Justin Slaubaugh from Blue Reef Agri-Marketing will be on hand to discuss Livestock Risk Protection (LRP)—a **CRITICAL** tool in today's high-priced cattle market.

We look forward to seeing you on Wednesday, February 26th!

Grund Beef Genetics



Sale Information

ACCOMODATIONS There are several nice motels in the area. If you need assistance please contact us (785) 821-1022 or (785) 821-1104.

TERMS & CONDITIONS All cattle sell under the standard Terms and Conditions for each respective breed association.

SEMEN INTEREST & POSSESSION The seller is retaining 50% semen interest on all bulls in the sale. Buyer is getting full possession and 50% semen interest. The semen interest is only being retained in case a bull is identified as a superior individual and the breeder wants to go back and collect semen for our use or other breeder use. In the case we choose to collect semen we will work with the new owner and schedule the collection around your schedule. We rarely exercise this option, but with progression of DNA technology we may want to utilize genetics you are buying.

PHONE BIDS If you are unable to attend the sale, please contact any of the sale representatives, auctioneer or owners. They will handle your bids confidentially and as if you were in attendance. You may bid online at DVAuction.com.

ANNOUNCEMENTS All announcements made from the auction block sale day take precedence over any printed material in this catalog.

INSURANCE Livestock Mortality Insurance will be available sale day with Coffman Liggett, (540) 383 - 7134.

VIEWING The bulls can be viewed any time – please call, (785) 821-1022.

TRUCKING Direct concerns to the seller of the bulls for assistance in trucking cattle have proper papers for interstate shipping.

DVAUCTION 1. Create an account at www.dvauction.com under the "create new account" tab. 2. Apply for bidding by clicking "apply for bidding" in the upper left corner of your screen, at least 24 hours prior to the auction. 3. Tune into the sale and make your purchase! For general questions please contact our office: (402) 316-5460 or support@dvauction.com. High speed internet access is required.

GUARANTEE All bulls selling for \$3750 or more are guaranteed for the first breeding season. A breeding season is defined as a 90-day period following the first turn out date of the bull. This is not an insurance policy. If a bull develops a problem, proper treatment or vet care is advised. If a replacement bull is available, he will be provided. If the buyer prefers no replacement bull, we will provide credit towards another bull in the following year, less the salvage value of the injured bull. Please notify us as soon as possible should a death or injury occur.

SIGHT- UNSEEN GUARANTEE If you are unable to attend the sale, we are offering a sight – unseen-program. We also will be broadcasting the sale on DV Auction to allow you to see a video of the bulls selling. We have also arranged a different set of eyes to talk to you about the bulls. These guys will give you an honest opinion on the bulls. Nick Wells 785-443-0233 and Jim Williams, 308-222-0170.





GRUND BEEF GENETICS ANNUAL BULL SALE

WEDNESDAY, FEBRUARY 26, 2025
1:00 PM MTN - SHARON SPRINGS, KS

SALE CONTACTS

JERRY GRUND, (785) 821-1022
CHISUM GRUND, (785) 821-3175
GRADY HAMMER, (785) 728 -7300
CALLAHAN GRUND, (785) 821-1082
DARRELL VANDIKE, (620) 376-8826
EMAIL - homeofhybridvigor@gmail.com

AUCTIONEER

GARREN WALROD, (785) 565-1221

SALE STAFF

DAKOTA FERGUSON, (785) 893-1609
Special Assignment
STEPHEN RUSSELL, (785) 458-2650
KS Stockman
ANDREW SYLVESTER, (785) 456-4352
Special Assignment
DR. PAUL RITTER, (785) 672-2500
Vet Work
DR. KAMI TAYLOR, (785) 687-8023
Vet Work
DAVID SLAUGHTER, (270) 556-4259
Consultant
NATE SMITH, (620) 546-4839
Top Dollar Angus
HAROLD BERTZ, (816) 661-2289
American Gelbvieh Association
TYLER BREEDEN, (785) 299-0250
Kansas Livestock Association - President Elect



LIVESTOCK RISK PROTECTION

JUSTIN SLABAUGH, (574) 238-4742
Blue Reef Agri-Marketing

BLUE REEF
AGRI - MARKETING

Justin will be at our Open House and Bull Sale to talk about Livestock Risk Protection (LRP) Insurance. We believe in LRP Insurance to protect these great cattle prices!

HIGHWAY 40

HIGHWAY 27

E. PARK ST

ASH ST

GRUND BEEF GENETICS

NIGHTHAWK RD

JOIN US AT THE *Ranch!*

EXPECTED PROGENY DIFFERENCES

DO THEY MATTER?

We are proud of the genetic improvement and years of performance data that are showcased in these bulls' EPD's. The bulls are weighed and adjusted to the age of the calf. They are put into contemporary groups and then ranked against each other. Once weights are taken, the bulls' EPD's reflect the performance information from the bull, his sire, dam and other relatives along with genomic information. EPD's change weekly since breeders throughout the country submit weights and measurements yearly. Taking this information into account, comparison is most accurate when using EPD's instead of individual weights. Over 90% of bulls are genomic tested for EPD's - genomic testing improves accuracy 20%.

I'M ONLY INTERESTED IN POUNDS AT WEANING: *67 and above on Weaning Weight*

I BACKGROUND MY CALVES AND FEED MY CALVES TO FINISH: *110 and above on Yearling Weight*

I WANT REPLACEMENT HEIFERS - *23 and above on Milk*

I'M USING BULLS ON MATURE COWS: *8 to 13 on Calving Ease*

I'M USING BULLS ON REPLACEMENT HEIFERS & 2ND CALF COWS: *14 and above on Calving Ease*



Understanding COAT COLOR REFERENCE

HOMO BLACK: All Calves will be black. Bull was DNA tested or was born by Homo Black parents

DOUBLE BLACK: Bull was NOT DNA tested for hide color. Parents are both black hided but there may be a red gene in pedigree.

BLACK: Bull has a Red parent or has been DNA tested to have the red gene.

BY THE NUMBERS

The **AVERAGE** of all bulls in the sale
RANK IN THE TOP 30% OF THE BREED

for the following traits:

WW • YW • MK • MARB • FPI

GELBIEH/BALANCER • BREED AVERAGES

CED	BW	WW	YW	MK	TM	REA	MB	FPI
13	-0.5	73	114	23	60	0.52	0.38	82.62

SIM-ANGUS • BREED AVERAGES

CED	BW	WW	YW	MK	REA	MB	API
12.4	0.2	76	117	24	0.67	0.36	133

RED ANGUS • BREED AVERAGES

CED	BW	WW	YW	MK	REA	MB	GM
13	-1.6	66	106	26	0.13	0.41	49

UNDERSTANDING *the stamps*

Selection of a bull for your operation is one of the most important jobs that will impact your operation for years to come. Visual appraisal continues to be an important tool when choosing your next herd sire. However, genetic predictions, especially with the progression of genomics has helped us be more accurate in predicting how his calves will perform. We at Grund Beef Genetics believe you CAN have both phenotype and performance! To help on the genetic selection side, we have helped simplify genetic selection this year through these unique “stamps” based upon the EPD’s and pedigrees of the bulls selling.



CALVING EASE STAMP

We strive to produce young sires that will rank in the Top 35% of the breed for Calving Ease Direct (CED) that grow fast and add pounds in the right package. CED is the most important indicator to help ensure less difficulties when calving, the bulls with a Calving Ease stamp in the catalog are ones deemed safe for use on first calf heifers.



MATERNAL STAMP

Maternal traits are essential for profitability in the cattle industry. If you are keeping replacement heifers, the bulls with a Maternal stamp have had their dam or granddam receive Dam of Merit or Dam of Distinction honors. Of all cows in the Gelbvieh Association, only the top 5% qualify for Dam of Merit and top 1% for Dam of Distinction!



TOP DOLLAR ANGUS

As referenced throughout the catalog, we are proud to be partners in Top Dollar Angus. To feed a growing world, it's our job as producers to produce a high-quality product. Growth, feedlot performance and carcass merit will continue to be important in the cattle business. Bulls with this stamp qualify for the Top Dollar Angus program with details by their name.



IGENITY - 50K

No matter the goals of your operation, you want to be sure your next herd sire breeds true to his EPDS when making breeding decisions. The Igenity stamp recognizes the bulls that have been 50K DNA tested for genomically enhanced EPD. Bulls with this stamp have higher accuracy EPDs.

MATERNAL SUPERIORITY



Our number 1 goal at **GRUND BEEF GENETICS** is to provide you with the highest quality herd sire that will add profit to your bottom line. Not only do these herd sires excel in the economically relevant traits that will add value to your calf crop, but they are backed by some of the most prolific mothers within the breed.

The American Gelbvieh Association honors females in the herdbook that display fertility and maternal superiority through the Dam of Merit program. Of the 40,132 active cows in the AGA herdbook, only 5% of the females qualify. **GRUND BEEF GENETICS** and family rank **12th amongst all active breeders for total number of Dam of Merit Females**. All great cowherds start with a strong foundation, rest assured these bulls are backed by some of the best females in the breed.



33 DAM OF
MERITS





GRUND BEEF GENETICS

**CARCASS
TESTED**

MORE THAN

**850
HEAD**

**WITH OVER 97% CHOICE OR
HIGHER QUALITY GRADE**





UNDERSTANDING THE *Feeding*

All the bulls are fed at **GRUND BEEF GENETICS** – which allows us to keep the cattle in their natural surroundings and away from other feedlot cattle that could expose the bulls to numerous diseases found in a feedlot setting. The bulls also have a large pen for exercise. The bulls are weaned on a moderate energy ration and then are fed a denser ration for November, December and January. The bulls are weighed and ultrasounded the first of February and then are moved back to a moderate energy ration until sale time.

We feel that 90 days of feeding a denser feed allows the bulls to sort themselves in terms of growth traits which is reflected in their EPD's once weights are taken. The bull's individual weights and pedigree helps determine his EPD's. Our bulls typically ultrasound 0.15 to 0.20 backfat and are ready to breed cows at turnout time!

FEED	AS FED/ #S PER DAY	% OF RATION
Sorghum Sudangrass	6.5#	27%
Corn Silage/ Whole Corn	16#	42%
Wet Distillers grain	11#	30%
Mineral/grain Supplement	0.50#	1%



Lot 1

GRU MT SUNFLOWER 536M

REG: 1607971 TATTOO: 536M DOB: 2/1/2024 %: 44

SITZ STELLAR 726D LAZY TV SAM U451
SITZ INCENTIVE 704H MS SAM 536C
 SITZ BARBARAMERE NELL 53F GRU MS IMPACT 353A



BALANCER

CED	BW	WW	YW	MK	TM	REA	MB	FPI
15	-1.3	80	130	26	66	0.42	0.5	91.64

BW 78

WW 748

Homo Black - Homo Polled - Mt Sunflower was raised by one of the best cow families at GBG. Dam is mother of GRU Early Encounter 536C who has been one of the top used sires of the breed. Sire comes from the Sitz program in Montana - Incentive is becoming well known for his outstanding females. 536M ranks in the top 25% of the breed for calving ease, growth and carcass traits. Top 15% of the breed for FPI. Mother is a Dam of Merit female. Early Encounter has impacted our herd in a big way - the females have been terrific, and his sons are always sale toppers. We would typically keep a bull of this quality for a Herd sire - but we are offering him to the public due to our heavy use of his maternal brother Early Encounter.



Lot **2**

GRU MOUNTAIN TIME 2025M

REG: 1607983 TATTOO: 2025M DOB: 2/12/2024 %: 87

HILLE Y109 NEW FRONTIER 33A ET
HILLE D453 MS ELAINE 744E
 HILLIE B110 MS ASTRO



PUREBRED

CED	BW	WW	YW	MK	TM	REA	MB	FPI
16	0.8	85	128	28	70	0.75	0.26	87.03

BW 85
WW 750

Homo Black - Homo Polled - Mountain Time 2025M is a brother to one of the top AI Gelbvieh bulls in the nation. - Grand Plan. We unfortunately lost the dam of Mountain Time and Grand Plan this year and this will be the last son selling out of this great Dam of Merit female. Mountain Time is a good looking, athletic bull, with tremendous depth of rib and muscle. 2025M ranks in the top 20% of the breed for calving ease, top 10% of the breed for growth and FPI. Outcross pedigree to many genetics today! We intend to use Mountain Time 2025M to make those great purebred Gelbvieh females. Recommendation for Heifers.



Lot 3

GRU MAVERICK 2029M

REG: 1607974 TATTOO: 2029M DOB: 2/1/2024 %: 50

CONNEALY CLARITY HILLE COLLEGIAN C134
POSS REMINGTON MS COLLEGIAN 714E
 POSS BLUEBLOOD 6502 HILLE C272



BALANCER

CED	BW	WW	YW	MK	TM	REA	MB	FPI
16	0.2	100	154	34	84	0.69	0.64	106.83

BW 76

WW 663

Black - Polled - Maverick stems from one of our top cow families. Dam is the mother of GRU Just N Time 714J- one of the leading AI Sires in the breed. Granddam is mother of GRU Join In 935J a bull we have used at GBG. Maverick is a long bodied, deep ribbed, thick made bull with excellent feet and legs. Awesome EPD's - ranks in the top 15% of the breed for CE - top 10% of the breed for marbling and top 1% of the breed for growth and FPI! Outcross genetics on both sides of his pedigree. Mother and Grandmother are both Dam of Merit females. Remington is a Genex sire and full brother to Winchester at ST Genetics. He also adds flexibility being Heterozygous Black meaning you can have breeding leading offspring- red or black hided. Recommendation for heifers.

DCH C272



SUPERIOR
female

4x DAM OF
MERIT

grand
MOTHER OF
GRU JUST N TIME 714J

grand
MOTHER OF
GRU MAVERICK 2029M





Sire of
LOT 4 & LOT 5

Lot **4 GRU MARIO 812M**

REG: 1608319 TATTOO: 812M DOB: 2/15/24 %: 50

S A V RAINFALL 6846
KINGSTON 2010K
MS TWISTER 0118H ET
MR NEVADA 532C
MS NEVADA 812F
MS PREDESTINED 546C



BALANCER

CED	BW	WW	YW	MK	TM	REA	MB	FPI	BW 76
14	-1	78	122	33	72	0.38	0.84	97.99	WW 663

Homo Black - Double Polled - 812M is a son of Kingston our herd bull we invested a lot of money in. Kingston has worked great at GBG. Kingston brings an outcross pedigree to GBG. 812M is out of a Dam of Merit female and Kingston is out of a Dam of Merit female. 812M is a thick made, deep ribbed, nice balanced bull. Ranks in the top 1% of the breed for marbling, top 30% of the breed for performance and top 3% of the breed for FPI.

Lot **5 GRU MR KINGSTON 723M**

REG: 1610652 TATTOO: 723M DOB: 2/15/24 %: 50

S A V RAINFALL 6846
KINGSTON 2010K
MS TWISTER 0118H ET
CONNEALY BLACK GRANITE
723E
055X



BALANCER

CED	BW	WW	YW	MK	TM	REA	MB	FPI	BW 83
14	0.5	80	122	36	75	0.42	0.47	87.77	WW 707

Black - Double Polled - 723M is a nice balanced, thick, deep ribbed bull by Kingston. Ranks in the top 35% of the breed for calving ease, top 25% of the breed for growth and carcass traits. Top 25% of the breed for FPI. Dam is a Dam of Merit.



Lot 6 GRU MR KINGSTON 275M

REG: 1610072 TATTOO: 275M DOB: 2/5/24 %: 50

S A V RAINFALL 6846
KINGSTON 2010K
 MS TWISTER 0118H ET



JOHN 316C
MS JOHN 275K
 MS NEVADA 812F

BALANCER

CED	BW	WW	YW	MK	TM	REA	MB	FPI	BW 82
13	-0.4	76	124	32	70	0.73	0.75	94.63	WW 646

Homo Black - Double Polled - 275K is a great looking, thick made bull out of a 1st calf heifer. Cow family is highly related to Lot 4. Super disposition. We know marbling pays and this guy ranks in the top 5% of the breed for carcass traits, and top 35% of the breed for growth traits. Top 10% for FPI.



Lot 7 GRU MANNING J107M

REG: 1610132 TATTOO: J107M DOB: 2/11/24 %: 50

BEAR MTN JUSTIFY
BEAR MTN JUSTICE
 BEAR MTN JAMIE 7860



EMINENCE E02
HILLE J107
 HILLE A323

BALANCER

CED	BW	WW	YW	MK	TM	REA	MB	FPI	BW 79
12	-0.2	96	155	33	81	0.52	0.51	98.53	WW 678

Homo Black - Double Polled - J107M is a outcross performance bull sired by the Alta sire - Justice. Dam is a terrific young cow with a 105 WW ratio. J107M is a nice balanced, deep ribbed bull with natural thickness. Ranks in the top 5% of the breed for growth traits, top 20% of the breed for carcass traits and top 5% of the breed for FPI.



Lot 8 GRU MR REMINGTON 402M

REG: 1608924 TATTOO: 402M DOB: 2/24/24 %: 41

CONNELLY CLARITY
POSS REMINGTON
 POSS BLUEBLOOD 6502



BIG DOG 101Y
GRU MS BIG DOG 402B
 MS HARLEY 151Y



BALANCER

CED	BW	WW	YW	MK	TM	REA	MB	FPI	BW 85
12	0.4	97	144	30	79	1.11	0.4	97.16	WW 754

Black - Homo Polled - 402M is out a Dam of Merit female that has produced 2 herd bulls in use at GBG. Sired by the exciting outcross Genex sire Remington. 402M ranks in the top 5% of the breed for growth traits - top 3% of the breed for FPI. FPI (Feedlot Profit Index) is an index that combines both growth and carcass traits. A cow family that has been super at GBG.



Lot 9

GRU MR MATERNAL 1023M

REG: 1608952 TATTOO: 1023M DOB: 2/6/24 %: 75

HILLE Y109
HILLE D453
 HILLE B110



GRAND PLAN 744G
MS GRAND 1023L
 GRU MS FINAL PRODUCT 3003A

BALANCER

CED	BW	WW	YW	MK	TM	REA	MB	FPI	BW 82
14	-1.8	87	137	30	75	0.72	0.57	98.4	WW 725

Homo Black - Double Polled - Wow - where to start with 1023 and his dam. Dam is a young cow that has absolutely produced 2 great sons - we retained her 1st son GRU Loyal 1023L which we used heavily last year. 1023M is another great son that is a æ blood and ranks in the top 10% of the breed for growth traits, top 15% of the breed for carcass traits and sports a top 3% FPI ranking. If you need some extra length, size and performance look up 1023M.



Lot 10

SHGR MR EL DORADO 7015M

REG: 4969644 TATTOO: 7015 DOB: 1/29/24 %: 100

WHEEL STARK 67G
SMOKY Y STARK K18
 SMOKY Y ERICA 1724E



RED U-2 RECKONING 149A
C-BAR ABIGRACE 7015E
 C-BAR ABIGRACE 264Z

RED ANGUS

CED	BW	WW	YW	MK	REA	MB	GM	BW 80
11	0.5	81	126	28	0.35	0.6	77	WW 776

7015M is a super stout, nice balanced, deep ribbed Red Angus bull that brings a lot of extra's to the table. 7015M ranks in the top 10% of the breed for growth and carcass traits. El Dorado uniquely combines pounds, performance, and quality carcass traits, in an attractive package. Dam has been a top producer that maintains a 104 MPPA and has raised sons working in purebred herds. El Dorado's pedigree is an outcross for many breeders looking to add growth and carcass merit to their herd. Retaining half semen interest.



Dam of Lot 10

Lot 11 SHGR MR MAZERATI 9401

REG: 4919336 TATTOO: 9401 DOB: 12/2/23 %: 100

RED U-2 RECKONING 149A
SIX MILE JOHN WICK 882E
 RED SIX MILE & CO GLORIA 29A
 RED LAZY MC HUSTLE 18T
COCKBURN CORA 254Z
 RED WILBAR CORA 443P



RED ANGUS

CED	BW	WW	YW	MK	REA	MB	GM	BW
10	1.6	84	143	32	0.38	0.2	61	76

WW 723

9401 is a December '23 born bull that has a lot of performance and eye appeal. His weaning and yearling EPD's rank in the top 5% for the Red Angus breed, while his carcass weight is in the top 1%. He's impressive to look at and has the extra rib, stoutness, and athleticism that his sire is known for. We think he will add performance, but his maternal EPD's read that his daughters should be worth retaining. Outcross genetics to many Red Angus.



Lot 12 GRU MR JUST 975M

REG: 1608327 TATTOO: 975M DOB: 2/20/24 %: 53

BIEBER CL ENERGIZE F121
JUST N TIME 714J
 MS COLLEGIAN 714E
 GRU MR BREAKOUT 511B
MS BREAKOUT 975G
 MS IMPACT 555C



BALANCER

CED	BW	WW	YW	MK	TM	REA	MB	FPI	BW
16	-1.6	83	126	32	74	0.9	0.49	95.13	75

WW 724

975M is a the right kind! 975M is a nice balanced, thick, deep ribbed bull with all the bells and whistles. Sired by Just in Time the mother of Lot 2. 975M ranks in the top 15% of the breed for calving ease, top 20% of the breed for growth and carcass traits. Recommended on heifers.





Lot 14 GRU MIDDLEMAN 6005M

REG: 4458478 TATTOO: 6005M DOB: 3/1/24 %: 50

WS PROCLAMATION E202
KBHR BOLD RULER H152
 BAR CK MS X38 106Z

BASIN PAYWEIGHT 1682
MS PAYWEIGHT 6005D
 GRU MS BARBARA 3004A



SIMMENTAL

CED	BW	WW	YW	MK	REA	MB	API	BW 73
17	-3	85	143	28	0.22	0.65	168.9	WW 754

Homo Black - Homo Polled - 6005M is a neat - SimxAngus bull! Nice balanced and thick being sired by the Genex bull Bold Ruler. Ranks in the top 10% of the breed for calving ease, top 15% of the breed for growth and carcass. Out of our best Angus cow that has generated many high dollar bulls.



Lot 15 GRU MR EPIC 7003M

REG: 4458476 TATTOO: 7003M DOB: 2/26/24 %: 50

WS ALL-AROUND Z35
OMF EPIC E27
 OMF TIME LESS B100

BASIN PAYWEIGHT 1682
GRU MS PAYWEIGHT 7003E
 GRU MS INFOCUS 078X



SIMMENTAL

CED	BW	WW	YW	MK	REA	MB	API	BW 76
18	-2.3	80	125	28	0.35	0.43	152	WW 667

Homo Black - Homo Polled - 7003M is a great looking bull with top 10% calving ease genetics and top 35% growth and carcass genetics. Ranks in the top 25% for API. Sired by the rock solid calving ease sire Epic.



Lot 16 GRU MOSES 230M

REG: 1610070 TATTOO: 230M DOB: 2/16/24 %: 60

WHIRLWIND 735E
LAZY TV WHIRLWIND J684
 LAZY TV MS BOULDER G288

FLYING H BIG CHIEF 26H
MS CHIEF 230K
 MS ENCOUNTER 075H



BALANCER

CED	BW	WW	YW	MK	TM	REA	MB	FPI	BW 83
18	-1.6	84	146	28	71	0.57	0.48	96.4	WW 726

Homo Black - Double Polled - Wow these kind are hard to make genetically - Calving Ease genetics ranking in the top 5% of the breed - Performance traits ranking in the top 10% of the breed and top 25% carcass genetics. 230M is a nice balanced, thick ended bull who was raised by a 1st calf heifer.

Lot 17 GRU MR KINGSTON 04M

REG: 1607968 TATTOO: 04M DOB: 2/15/24 %: 50

S A V RAINFALL 6846
KINGSTON 2010K
 MS TWISTER 0118H ET
 CRICKET
MS CRICKETT 04H
 KHR 204Z



BALANCER

CED	BW	WW	YW	MK	TM	REA	MB	FPI	BW 84
14	-0.9	74	119	27	64	0.43	0.57	88.55	WW 707

Homo Black - Double Polled - 04M is another stout, deep ribbed, good structured son of Kingston. Ranks in the top 35% of the breed for calving ease and growth traits. Top 20% of the breed for carcass and FPI. Young dam has a WW ratio of 102 on 3 calves.

Volume DISCOUNT

- FIVE BULLS – 5%
- SIX BULLS – 6%
- SEVEN BULLS – 7%
- EIGHT BULLS – 8%
- NINE+ BULLS – 9%

Lot 18 GRU MR KINGSTON 786M

REG: 1608318 TATTOO: 786M DOB: 3/1/24 %: 50

S A V RAINFALL 6846
KINGSTON 2010K
 MS TWISTER 0118H ET
 GRU MR BREAKOUT 511B
MS BREAKOUT 786E
 GRU FACTOR 442B



BALANCER

CED	BW	WW	YW	MK	TM	REA	MB	FPI	BW 80
11	0.9	82	131	31	72	0.51	0.54	89.92	WW 704

Homo Black - Double Polled - 786M is typical of the Kingston progeny. Thick, Stout, Deep Ribbed and great structured. Ranks in the top 20% of the breed for growth traits, carcass traits and FPI. The sale is deep in these stout - Kingston sons.



Lot 19 GRU MR KINGSTON 117M

REG: 1608300 TATTOO: 117M DOB: 2/8/24 %: 50

S A V RAINFALL 6846
KINGSTON 2010K
 MS TWISTER 0118H ET
 CRICKET
MS CRICKETT 117J
 MS COMPLETE 817U



BALANCER

CED	BW	WW	YW	MK	TM	REA	MB	FPI	BW 87
10	0.2	79	129	29	68	0.93	0.35	84.69	WW 777

Homo Black - Double Polled - 117M is a man! Tremendous bull to see in person and he ranks in the top 25% of the breed for growth traits while still being in the top 50% of the breed for carcass traits. Dam is a young cow - Granddam was a Dam of Merit.



Lot 20 4HFF GRU 816L

REG: 4945024 TATTOO: 816L DOB: 12/21/23 %: 100

LACY COLLUSION 115F
C-BAR RED BARON 207J
 C-BAR LEANNA 8141F



SPUR FRANCHISE OF GARTON
C-BAR STONY 837F
 C-BAR MS STONY A302

RED ANGUS

CED	BW	WW	YW	MK	REA	MB	GM	BW	WW
11	-1.9	70	112	28	0.44	0.59	77	85	762

816L is a big, stout bull with size and stretch. 816L hits a lot of profit traits with his EPD's. 816L ranks in the top 15% of the breed for growth, top 30% of the breed for marbling and top 5% of the breed for Grid Master.

Lot 21 4HFF GRU 409L

REG: 4945008 TATTOO: 409L DOB: 12/13/23 %: 100

LACY COLLUSION 115F
C-BAR RED BARON 207J
 C-BAR LEANNA 8141F



SPUR FRANCHISE OF GARTON
C-BAR STONY 837F
 C-BAR MS STONY A302

RED ANGUS

CED	BW	WW	YW	MK	REA	MB	GM	BW	WW
12	-0.7	75	115	28	0.60	0.57	71	85	736

409L is a full brother to Lot 20-flushmates. 409L is just like his brother - big - stout- with size and stretch. 409L also hits the top 15% of the breed for growth traits and has a Grid Master score in the top 5% of the breed.

Lot 22 GRU MR BOLD RULER 9009M

REG: 4471033 TATTOO: 9009M DOB: 2/17/24 %: 75

WS PROCLAMATION E202
KBHR BOLD RULER H152
 BAR CK MS X38 106Z



TJ DIPLOMAT 294D
EGL MISS DIPLOMAT 9009GG
 EGL EMILENA 74E

SIMMENTAL

CED	BW	WW	YW	MK	REA	MB	API	BW	WW
13	0.4	81	131	27	0.56	0.75	163.4	86	708

Double Black - Double Polled - 9009M is a big, stout, thick 1/2 blood Sim x Angus bull. Sired by the popular Bold Ruler bull at Genex. 9009M ranks in the top 40% of the breed for growth traits, top 10% of the breed for marbling and API.

Lot 23 GRU MR ROCK 921M

REG: 1610034 TATTOO: 921M DOB: 3/17/24 %: 67

LAZY TV ROCK G501
MR ROCK 1322J
 MS 710E 907G



TWISTER 451B
MS TWISTER 921G
 MS GOVERNOR 921W

BALANCER

CED	BW	WW	YW	MK	TM	REA	MB	FPI	BW	WW
18	-1.7	84	124	27	69	0.46	0.51	95.88	75	690

Homo Black - Homo Polled - 921M is a maternal brother to our Herdsire GRU Killin It 921K. 921M is a bit younger than other bulls but he brings all the goods to the table. 921M is a good looking, thick, sound structured bull that ranks in the top 15% of the breed for growth and carcass traits. The extra bonus is that he ranks in the top 5% of the breed for calving ease and FPI! Recommended for heifers.

Lot 24 GRU MR KILLIN IT 120M

REG: 1607969 TATTOO: 120M DOB: 2/6/24 %: 50

BALDRIDGE MOVIN ON G780
KILLIN IT 921K
 MS TWISTER 921G



KESSLERS COMMODORE 6516
GRU MS COMMODORE 120J ET
 HILLE C272

BALANCER

CED	BW	WW	YW	MK	TM	REA	MB	FPI	BW	WW
10	0.6	84	132	27	70	0.5	0.52	90.32	88	757

Homo Black - Double Polled - 120M is powerful bull that will flat out add pounds. Dam is a full sister to GRU Join In 935J. 120M ranks in the top 15% of the breed for growth and carcass traits. Top 15% in FPI! Comes from a great cow family that also produced GRU Just N Time 714J. Dam is a young female - but there are a lot of Dam of Merits back in the pedigree on females old enough to qualify as Dam of Merit's.

Lot 25 GRU MR KILLIN IT 133M

REG: 1608688 TATTOO: 133M DOB: 2/18/24 %: 42

BALDRIDGE MOVIN ON G780
KILLIN IT 921K
 MS TWISTER 921G



EARLY ENCOUNTER 536E
MS ENCOUNTER 133J
 MS CRICKET 723E

BALANCER

CED	BW	WW	YW	MK	TM	REA	MB	FPI	BW	WW
11	-0.7	71	118	26	62	0.28	0.69	89.34	83	715

Double Black - Double Polled - 133M is another high weaning weight son of Killin It. Good looking - sound with muscle shape. 133M ranks in the top 40% of the breed for growth EPD's and top 5% ranking in marbling. Top 20% in FPI!

Lot 26 GRU MR KILLIN IT 194M

REG: 1607973 TATTOO: 194M DOB: 2/14/24 %: 46

BALDRIDGE MOVIN ON G780
KILLIN IT 921K
 MS TWISTER 921G

MR STUNNER 995G ET
MS STUNNER 194J
 MS EARLY ENCOUNTER ET 902G



BALANCER

CED	BW	WW	YW	MK	TM	REA	MB	FPI	BW 87
9	1.5	76	128	27	65	0.49	0.37	81.05	WW 740

Homo Black - Double Polled - 194M is a man and has power packed performance. 194M is thick made and he ranks in the top 25% of the breed for growth traits. The kind to make high price feeder cattle.

Lot 27 GRU MR GRAND 124M

REG: 1611641 TATTOO: 124M DOB: 3/12/24 %: 72

TWISTER 451B
GRAND PLAN 744G
 MS ELAINE 744E

GUNFIGHT 402G
MS GUNFIGHT 124J
 MS EARLY ENCOUNTER 905G



BALANCER

CED	BW	WW	YW	MK	TM	REA	MB	FPI	BW 81
12	3.2	95	153	30	77	0.84	0.41	93.13	WW 754

Homo Black - Double Polled - Wow 124M is one of the genetic gems in this sale for performance and pounds. 124M ranks in the top 5% of the breed for growth traits and top 10% of the breed for FPI. Pounds and carcass traits are all included!



Lot 28 GRU MR GRAND 01M

REG: 1608304 TATTOO: 01M DOB: 3/14/24 %: 68

TWISTER 451B
GRAND PLAN 744G
 MS ELAINE 744E

CRICKET
MS CRICKETT 01H
 MS PREDESTINED 101Y



BALANCER

CED	BW	WW	YW	MK	TM	REA	MB	FPI	BW 79
12	-0.5	80	122	26	66	0.66	0.33	86.47	WW 747

Homo Black - Double Polled - 01M is stunning in his look while having tremendous muscle shape. 01M ranks in the top 25% of the breed for growth traits and still ranking in the top 35% of the breed for FPI.



Lot 29 GRU MR MAYBERRY 1027M

REG: 1611640 TATTOO: 1027M DOB: 2/22/24 %: 72

HILLE Y109
HILLE D453
 HILLE B110

GRAND PLAN 744G
MS GRAND 1027J
 LAR 9Q17 BARBARA 438



BALANCER

CED	BW	WW	YW	MK	TM	REA	MB	FPI	BW 80
14	0.7	92	149	28	74	0.79	0.28	91.6	WW 678

Double Black - Double Polled - 1027M is a powerful, deep ribbed bull with size and length of body. Out of a terrific Grand Plan daughter. 1027M ranks in the top 5% of the breed for growth and top 15% of the breed for FPI.

Lot 30 SHGR MR THUNDERBIRD 011

REG: 4969710 TATTOO: 11 DOB: 1/25/24 %: 100

WEBR MAXED OUT 627
J6 MAXED OUT 121G
 J6 TEMPEST B300



WR MR REDEMPTION 130E
HAYN MS CASSIE LOU 011H
 ROJAS KASSIE 117X 7111

RED ANGUS

CED	BW	WW	YW	MK	REA	MB	GM	BW	WW
13	-2.2	77	124	27	0.43	0.25	45	78	683

011M is an outcross Red Angus bull that is nice balanced, long bodied and thick ended. 011M ranks in the top 15% of the breed for growth traits, while being in the top 30% of the breed for calving ease. Sports a top 30% Herd Builder EPD!

Lot 31 4HFF GRU X12M

REG: 4945032 TATTOO: X12 DOB: 1/16/24 %: 100

BIEBER CL ATOMIC C218
BIEBER CL ENERGIZE F121
 BIEBER CL ADELLE 575D



LSF MEW X-FACTOR 6693D
LSF SRR BELLE E7338 G9209
 LSF SRR BELLE Z2356 E7338



RED ANGUS

CED	BW	WW	YW	MK	REA	MB	GM	BW	WW
18	-6.1	63	109	26	0.34	0.53	85	80	661

X12M is one of top Red Angus heifer bull prospects. X12M is thick, square made with good depth of rib and structure. X12M ranks in the top 10% of the breed for calving ease, marbling and grid merit. Recommended for heifers.

Lot 32 GRU MR ENCOUNTER 134M

REG: 1608307 TATTOO: 134M DOB: 2/16/24 %: 50

BASIN PAYWEIGHT 1682
EARLY ENCOUNTER 536E
 MS SAM 536C



MR WATCHMAN WCR59 8156F
MS WATCHMAN 134J
 MS CRICKET 844F



BALANCER

CED	BW	WW	YW	MK	TM	REA	MB	FPI	BW	WW
17	-2.4	69	126	30	65	0.55	0.45	88.55	76	698

Black - Double Polled - Wow what a calving ease bull! 134M is a man, with thickness, depth of body and power. 134M ranks in the top 10% of the breed for calving ease while being in the top 25% of the breed for growth, carcass and FPI. The Early Encounter Sons are always some of the most sought-after bulls! Granddam is a Dam of Merit female. Recommended for heifers.

Lot 33 GRU MR ENCOUNTER 116M

REG: 1610062 TATTOO: 116M DOB: 2/10/24 %: 50

BASIN PAYWEIGHT 1682
EARLY ENCOUNTER 536E
 MS SAM 536C



CRICKET
MS CRICKETT 116J
 GRU MS STOUT 432B

BALANCER

CED	BW	WW	YW	MK	TM	REA	MB	FPI	BW	WW
13	2.1	83	142	28	69	0.64	0.52	90.41	86	643

Homo Black - Double Polled - 116M is another great looking, stout, thick ended Early Encounter son. A performance bull that ranks in the top 15% of the breed for growth traits, top 20% of the breed for carcass and FPI traits. Granddam is a Dam of Merit female.

Lot 34 GRU MR ENCOUNTER 260M

REG: 1608679 TATTOO: 260M DOB: 2/2/24 %: 50

BASIN PAYWEIGHT 1682
EARLY ENCOUNTER 536E
 MS SAM 536C



MR STUNNER 995G ET
MS STUNNER 242K
 GRU MS STOUT 432B



BALANCER

CED	BW	WW	YW	MK	TM	REA	MB	FPI	BW	WW
16	-3.9	67	114	31	64	0.31	0.49	88.34	73	655

Double Black - Double Polled - A great calving ease prospect with muscle, depth of rib and a great look. 260M ranks in the top 10% of the breed for calving ease and the top 15% of the breed for marbling and FPI. Recommended for heifers.

Lot 35 GRU MR OUTLAW 111M

REG: 1610061 TATTOO: 111M DOB: 2/17/24 %: 63

NEW FRONTIER 33A ET
AMERICAN OUTLAW
 MISS FORTUNE C015 ET



KESSLERS COMMODORE 6516
GRU MS COMMODORE 111J ET
 MS COMPLETE 817U

BALANCER

CED	BW	WW	YW	MK	TM	REA	MB	FPI	BW	WW
13	0.4	88	137	24	69	0.76	0.7	98.06	79	679

Homo Black - Double Polled - 111M is a great beef bull. Stout, thick, performance packed genetics. Ranks in the top 15% of the breed for growth traits and top 3% of the breed for carcass and FPI. He will sire the profitable type! Granddam is a Dam of Merit.



Lot 36 GRU MR KINGSTON 105M

REG: 1608305 TATTOO: 105M DOB: 3/1/24 %: 50

S A V RAINFALL 6846
KINGSTON 2010K
 MS TWISTER 0118H ET
 CRICKET
MS CRICKETT 105J
 MS PREDESTINED 715E



BALANCER

CED	BW	WW	YW	MK	TM	REA	MB	FPI	BW 86
12	1	84	138	29	71	0.22	0.48	90.14	WW 675

Double Black - Double Polled - 105M is a bull that hits a lot of profit traits. 105M is a nice balanced, thick made bull out of our great Kingston Herdsire. 105M ranks in the top 10% of the breed for growth traits, top 25% of the breed for carcass traits and top 15% for FPI.

Lot 37 GRU MR KINGSTON 755M

REG: 1610671 TATTOO: 755M DOB: 2/5/24 %: 50

S A V RAINFALL 6846
KINGSTON 2010K
 MS TWISTER 0118H ET
 GRU MR BREAKOUT 511B
MS BREAKOUT 755E
 GRU MS SAFEGUARD 423B



BALANCER

CED	BW	WW	YW	MK	TM	REA	MB	FPI	BW 84
11	-2.3	75	117	33	70	0.55	0.78	95.7	WW 709

Black - Double Polled - 755M is an exciting son of Kingston out a great Dam of Merit female at GBG. Note the elite carcass genetics and FPI that rank in the top 5% of the breed while still ranking in the top 40% of the breed for growth traits. Backed by a great cow family!



Lot 38 GRU MR KINGSTON 924M

REG: 1610036 TATTOO: 924M DOB: 3/12/24 %: 58

S A V RAINFALL 6846
KINGSTON 2010K
 MS TWISTER 0118H ET
 MR DRAFTMAN 334D
MS DRAFTMAN 924G
 GRU MS WATCHMAN 404B



BALANCER

CED	BW	WW	YW	MK	TM	REA	MB	FPI	BW 87
10	0.9	86	142	28	71	0.59	0.53	92.36	WW 742

Homo Black - Double Polled - 924M is an elite bull for profit traits. 924M grew and weaned well! 924M ranks in the top 10% of the breed for growth traits, top 20% of the breed for carcass traits and top 15% FPI. Outcross pedigree to many in our offering.

Lot 39 GRU MR JUST 107M

REG: 1608306 TATTOO: 107M DOB: 2/14/24 %: 43

BIEBER CL ENERGIZE F121
JUST N TIME 714J
 MS COLLEGIAN 714E
 JOHN 316C
MS JOHN 107J
 MS PAYWEIGHT 717E



BALANCER

CED	BW	WW	YW	MK	TM	REA	MB	FPI	BW 80
11	0.2	81	124	32	73	0.54	0.44	88.68	WW 740

Black - Double Polled - 107M is built like a Peterbuilt truck - wide and stout! A full brother to 107M was the top grading steer in the Kinsley AGA steer trial going Prime in 2024. 107M ranks in the top 25% of the breed for growth, carcass and FPI. The Just N Time progeny are exciting breeders around the breed.



The **LOCK FAMILY**

Lot 40 GRU MR PROLIFIC H733K

REG: 1610653 TATTOO: H733M DOB: 2/29/24 %: 44

ELLINGSON PROFOUND 8155
ELLINGSON PROLIFIC
 EA QUEEN 8070



LRL ARTEMIS D112
HILLE H733
 HILLE C301

BALANCER

CED	BW	WW	YW	MK	TM	REA	MB	FPI	BW 87
12	-0.1	95	148	21	69	0.51	0.32	92.90	WW 719

Black - Double Polled - H733M is a bull with fresh genetics. Sired by one of the hottest Angus bulls at ST genetics- Prolific - dam is great looking female from Chimney Butte. H733M is a stout, deep ribbed, good structured bull. 733M ranks in the top 5% of the breed for growth traits - top 35% of the breed for carcass traits and top 10% FPI.



Lot 41 GRU MR KINGSTON 733M

REG: 1610669 TATTOO: 733M DOB: 2/16/24 %: 50

S A V RAINFALL 6846
KINGSTON 2010K
 MS TWISTER 0118H ET



JOHN 316C
MS JOHN 733E
 MS ANALYST 832U

BALANCER

CED	BW	WW	YW	MK	TM	REA	MB	FPI	BW 77
14	-1.4	81	124	28	69	0.54	0.48	91.45	WW 649

Homo Black - Double Polled - 733M is a top notch bull. 733M has a great design, rib shape, muscle and super structured. 733M combines a nice calving ease EPD with top 25% growth and carcass traits. Top 15% FPI!



THREE GENERATIONS OF
Ground Beef Genetics Customers

Lot 42 GRU MR KINGSTON 650M

REG: 1608674 TATTOO: 650M DOB: 3/11/24 %: 56

S A V RAINFALL 6846
KINGSTON 2010K
 MS TWISTER 0118H ET



GRU MR BREAKOUT 511B
MS BREAKOUT 650D
 GRU MS ASTRO 163Y



BALANCER

CED	BW	WW	YW	MK	TM	REA	MB	FPI	BW 82
10	-0.1	78	128	35	74	0.43	0.5	88.13	WW 743

Double Black - Double Polled - 650M is a great beef bull. 650M has size, length of body with rib shape and muscle. 650M ranks in the top 25% of the breed for growth, carcass and FPI. Mother is a Dam of Merit female.

Lot 43 GRU MR KINGSTON 296M

REG: 1610073 TATTOO: 296M DOB: 2/6/24 %: 50

S A V RAINFALL 6846
KINGSTON 2010K
 MS TWISTER 0118H ET
 BIG ANDY D672
MS ANDY 296K ET
 MS PAYWEIGHT 6005D



BALANCER

CED	BW	WW	YW	MK	TM	REA	MB	FPI	BW 84
14	-0.9	84	142	29	71	0.37	0.65	97.46	WW 617

Black- Double Polled - 296M continues to amaze us. 296M was raised by a 1st calf heifer and was in a pasture with very little rainfall. 296M sports some outstanding EPD's for profit traits. 296M ranks in the top 15% of the breed for growth and carcass traits. Top 5% of the breed for FPI. Don't miss this bull, you will be proud to own him!

Lot 44 GRU MR JOIN IN 739M

REG: 1608927 TATTOO: 739M DOB: 3/11/24 %: 53

KESSLERS COMMODORE 6516
GRU JOIN IN 935J ET
 HILLE C272
 JOHN 316C
MS EDWARDS 739E ET
 GRU MS ANNIE 334A



Lot 45 GRU MR JUST 555M

REG: 1611628 TATTOO: 555M DOB: 3/3/24 %: 55

BIEBER CL ENERGIZE F121
JUST N TIME 714J
 MS COLLEGIAN 714E
 GRU IMPACT 850X
MS IMPACT 555C
 2213Z



BALANCER

CED	BW	WW	YW	MK	TM	REA	MB	FPI	BW 85
15	0.3	78	123	33	74	0.1	0.42	87.02	WW 678

Double Black - Double Polled - 739M is a nice balanced, thick made bull that hits a lot of profit traits. 739M ranks in the top 25% of the breed for growth traits, top 35% of the breed for carcass traits and top 25% for calving ease and FPI. Out of a Dam of Merit female.

BALANCER

CED	BW	WW	YW	MK	TM	REA	MB	FPI	BW 75
14	-0.7	78	118	28	67	0.53	0.42	88.17	WW 705

Red -Double Polled - 555M is another rock solid some of Just N Time. The Just N Time progeny are fault free cattle. 555M is stout, thick and ranks in the top 35% of the breed for calving ease, top 25% of the breed for growth and FPI. Raised by a Dam of Merit female.

Lot 46 SHGR MR VIPER 014

REG: 4969650 TATTOO: 14 DOB: 2/9/24 %: 100

SIX MILE JOHN WICK 882E
NIO GREELEY 0076
 VF LAKOTA C302-0139
 WEBR BEARTOOTH 887
JENS MS KERRY 014H
 CALY MS MARIAH 8154



RED ANGUS

CED	BW	WW	YW	MK	REA	MB	GM	BW 77
11	0.5	81	126	28	0.6	0.35	29	WW 781

014M is a full brother to the top selling bull in 2024 and is a current herd sire for Smoky Y Ranch. 014M is a stout, easy fleshing, nice balanced bull that ranks in the top 30% of the breed for growth traits. His dam boasts the highest MPPA index in our herd at 107. Viper had an impressive 781 lb adjusted weaning weight, combined with a HerdBuilder index in the top 17% of the breed.

The **SUMMERS FAMILY**

Lot 47 GRU MR JUST 865M

REG: 1610674 TATTOO: 865M DOB: 3/1/24 %: 63

BIEBER CL ENERGIZE F121
JUST N TIME 714J
 MS COLLEGIAN 714E

139C

MS SANDHILLS 865F
 GRU MS HARLEY 465B



BALANCER

CED	BW	WW	YW	MK	TM	REA	MB	FPI	BW 77
19	-2.4	75	120	27	65	0.28	0.3	85.89	WW 659

Black - Double Polled - 865M is a super nice balanced black Just N Time son. Heifer bull ranking in top 5% for calving ease, top 35% of the breed for growth and FPI! Raised by a Dam of Merit.

Lot 48 GRU MR KINGSTON 890M

REG: 1608324 TATTOO: 890M DOB: 3/23/24 %: 52

S A V RAINFALL 6846
KINGSTON 2010K
 MS TWISTER 0118H ET

MR NEVADA 532C

MS NEVADA 532-890F
 GRU MS STOUT 432B



Lot 49 GRU MR HUGO K437M

REG: 1610649 TATTOO: K437M DOB: 2/4/24 %: 44

EARLY ENCOUNTER 536E
HUGO 732H
 MS JOHN 732E

CHESTNUT UNITED

LAZY TV MS UNITED K437
 LAZY TV MS STATE H417



BALANCER

CED	BW	WW	YW	MK	TM	REA	MB	FPI	BW 80
12	0.3	84	133	32	74	0.54	0.75	97.84	WW 743

Homo Black - Double Polled - There is always that 1 bull that is younger but can match up with the big boys. 890M has been high on our radar screen. 890M ranks in the top 15% of the breed for growth traits, top 5% of the breed for marbling! He ranks in the top 5% for FPI! A profit bull with a great look.

BALANCER

CED	BW	WW	YW	MK	TM	REA	MB	FPI	BW 76
16	-2.6	67	112	25	62	0.32	0.47	85.49	WW 657

Homo Black - Homo Polled - K437M is an outstanding calving ease bull that is good looking and stout. 437M ranks in the top 15% of the breed for calving ease and top 25% of the breed for marbling. Top 35% FPI!



FOUR GENERATIONS OF
Ground Beef Genetics Customers



Lot 50 GRU MR KINGSTON 916M

REG: 1610675 TATTOO: 916M DOB: 2/26/24 %: 50

S A V RAINFALL 6846
KINGSTON 2010K
 MS TWISTER 0118H ET



OPTIMIZER 148A24
MS OPTIMIZER 916G
 MS PAYWEIGHT 716E

BALANCER

CED	BW	WW	YW	MK	TM	REA	MB	FPI	BW 84
10	-0.3	87	142	28	71	0.36	0.49	93.13	WW 650

Double Black - Double Polled - Wow 916M is genetic gem. 916M is a nice balanced bull that ranks in the top 10% of the breed for growth, top 20% of the breed for carcass traits. FPI is top 10%! High odds 916M is Homo Black.

Lot 51 GRU MR GRAND 160M

REG: 1608675 TATTOO: 160M DOB: 3/16/24 %: 65

TWISTER 451B
GRAND PLAN 744G
 MS ELAINE 744E



DVAR HUCKLEBERRY 871
MS HUCKLEBERRY 160J
 MS TWISTER 921G

BALANCER

CED	BW	WW	YW	MK	TM	REA	MB	FPI	BW 83
9	1.4	89	141	27	72	0.71	0.33	88.38	WW 744

Homo Black - Homo Polled - 160M is a powerful dude. Mother is a maternal sister to our herd sire Killin It 921K. 160M is a performance bull that ranks in the top 10% of the breed for growth traits with a FPI ranking in the top 25% of the breed.

Lot 52 GRU MR ENCOUNTER 208M Lot 53 GRU KXXX 790M

REG: 1610069 TATTOO: 208M DOB: 2/1/24 %: 50

BASIN PAYWEIGHT 1682
EARLY ENCOUNTER 536E
 MS SAM 536C



MR STUNNER 995G ET
MS STUNNER 208KT
 MS CONSENSUS 615D

BALANCER

CED	BW	WW	YW	MK	TM	REA	MB	FPI	BW 76
12	-1.2	68	121	29	63	0.65	0.59	88.03	WW 649

Homo Black - Double Polled - 208M will be another popular son of the great Early Encounter bull. The Early Encounter x Stunner pedigree has been a great mating at GBG. 208M ranks in the top 40% of the breed for growth, top 10% of the breed for marbling and top 25% for FPI.

REG: 1610672 TATTOO: 790M DOB: 2/26/24 %: 50

S A V RAINFALL 6846
KINGSTON 2010K
 MS TWISTER 0118H ET



MR NEVADA 532C
MS NEVADA 311A



BALANCER

CED	BW	WW	YW	MK	TM	REA	MB	FPI	BW 83
17	-0.9	74	124	29	65	0.2	0.73	93.08	WW 613

Homo Black - Double Polled - 790M is a great looking bull. 790M ranks in the top 15% of the breed for calving ease, top 40% of the breed for growth and top 5% of the breed for marbling. Top 10% FPI. Outcross calving ease genetics.



Lot 54 GRU MR ROCK 204M

REG: 1608691 TATTOO: 204M DOB: 2/5/24 %: 50

LAZY TV ROCK G501
MR ROCK 1322J
MS 710E 907G

MR STUNNER 995G ET
MS STUNNER 204K
MS STOUT 504C



BALANCER

CED	BW	WW	YW	MK	TM	REA	MB	FPI	BW 84
11	1.2	84	129	27	69	0.78	0.42	88.76	WW 675

Homo Black - Double Polled - 204M is a stout, good looking rascal. Sired by our heifer bull - Rock. The Rock bulls sold very well last year. 204M ranks in the top 15% of the breed for growth traits, top 35% of the breed for marbling and top 20% for FPI!

WATCH THE VIDEOS ON DV AUCTION



WWW.DVAUCTION.COM
Watch the sale in real time and buy online.

Lot 55 GRU MR JUST H140M

REG: 1611752 TATTOO: H140M DOB: 2/20/24 %: 50

BIEBER CL ENERGIZE F121
JUST N TIME 714J
MS COLLEGIAN 714E

ENCORE E7166
H140
ARIA Y881



BALANCER

CED	BW	WW	YW	MK	TM	REA	MB	FPI	BW 72
15	-1.5	73	122	25	61	0.52	0.45	86.72	WW 674

Red - Double Polled - 140M is a solid, no holes bull that brings a lot of profit traits to the table. 140M ranks in the top 25% of the breed for calving ease, top 30% of the breed for growth and carcass traits. Top 25% in FPI.



Lot 56 SHGR MR JAGUAR 293

REG: 4969694 TATTOO: 293 DOB: 2/11/24 %: 100

WHEEL STARK 67G
SMOKY Y STARK K18
SMOKY Y ERICA 1724E

NIO GREELEY 0076
CALY MS SHEENA 293
CALY SWEET CAROLINE 93G



RED ANGUS

CED	BW	WW	YW	MK	REA	MB	GM	BW 85
10	1.2	80	115	23	0.14	0.55	58	WW 724

293M is a thick, stout made bull that ranks in the top 25% of the breed for MARB. 293M ranks in the top 10% of the breed for growth and top 35% of the breed for Grid Master.

Lot 57 SHGR MR CHARGER 904

REG: 4969670 TATTOO: 904 DOB: 3/7/24 %: 100

SIX MILE JOHN WICK 882E
NIO GREELEY 0076
VF LAKOTA C302-0139

9 MILE FRANCHISE 6305
C-BAR MIMI 904G
C-BAR MISS MIMI 458B



RED ANGUS

CED	BW	WW	YW	MK	REA	MB	GM	BW 76
13	-3.2	70	110	26	0.39	0.38	55	WW 708

904M is a nice balanced bull that was raised by a great 9 Mile Franchise daughter. 904M is a low-birth-weight bull that should work on heifers. 904M ranks in the top 40% of the breed for growth and grid merit.



Lot 58 GRU MR EPIC 74M

REG: 4458483 TATTOO: 74M DOB: 3/9/24 %: 75

WS ALL-AROUND Z35
OMF EPIC E27
 OMF TIME LESS B100
 CCR BOULDER 1339A
EGL EMILENA 74E
 EAGLE PASS EMILENA 21C



SIMMENTAL

CED	BW	WW	YW	MK	REA	MB	API	BW 81
14	-1.3	75	111	25	0.53	0.46	148.9	WW 668

74E is a Sim x Angus bull that is rock solid. 74M is a nice balanced bull that ranks in the top 30% of the breed for calving ease, top 45% of the breed for growth and top 30% of the breed for carcass traits.

Lot 59 GRU MR EPIC 79M

REG: 4473006 TATTOO: 79M DOB: 2/11/24 %: 50

WS ALL-AROUND Z35
OMF EPIC E27
 OMF TIME LESS B100

G A R ASHLAND
G A R ASHLAND B79
 G A R SUNRISE 1906



SIMMENTAL

CED	BW	WW	YW	MK	REA	MB	API	BW 76
15	-1	90	132	26	0.71	0.6	154.7	WW 676

Homo Black - Homo Polled - 79M is a growthy dude that combines great calving ease also. 79M ranks in the top 25% for calving ease, growth, marbling and API. A bull that brings profit traits!

Lot 60 GRU MR KINGSTON 2023M ET

REG: 1607979 TATTOO: 2023M DOB: 2/2/24 %: 56

S A V RAINFALL 6846
KINGSTON 2010K
 MS TWISTER 0118H ET

LAZY TV SAM U451
GRU MS ANNIE 334A
 MISS FIRST LOOK FIONA



BALANCER

CED	BW	WW	YW	MK	TM	REA	MB	FPI	BW 86
12	0.8	80	121	34	74	0.54	0.53	89.13	WW 614

Homo Black - Double Polled - 2023M is an embryo calf out one of our top cow families. 2023M is a nice balanced, thick, good structured bull. 2023M ranks in the top 30% of the breed for growth traits, top 20% of the breed for carcass and FPI. Raised by a 1st calf recipient heifer.

Lot 61 GRU MR KINGSTON 046M

REG: 1608682 TATTOO: 046M DOB: 2/21/24 %: 50

S A V RAINFALL 6846
KINGSTON 2010K
 MS TWISTER 0118H ET

CRICKET
MS CRICKETT 046H
 MS PREDESTINED 546C



BALANCER

CED	BW	WW	YW	MK	TM	REA	MB	FPI	BW 86
10	0.4	81	128	28	69	0.72	0.48	88.06	WW 675

Double Black - Double Polled - 046M is a bull with size, length of body and performance. 046M ranks in the top 20% of the breed for growth, carcass and FPI. 046M will sire profitable feeder or fat cattle!

Lot 62 GRU MR KINGSTON 094M

REG: 1610695 TATTOO: 094M DOB: 2/29/24 %: 50

S A V RAINFALL 6846
KINGSTON 2010K
 MS TWISTER 0118H ET

OPTIMIZER 148A24
MS OPTIMIZER 094H
 MS JOHN 836F ET



BALANCER

CED	BW	WW	YW	MK	TM	REA	MB	FPI	BW 81
15	0.8	89	143	28	73	0.44	0.44	92.97	WW 603

Double Black - Homo Polled - 094M is another bull that was raised in a pretty dry area but WOW look at his stats! Unique bull that ranks in the top 25% of the breed for calving ease, top 10% of the breed for growth and top 30% of the breed for carcass traits. Top 10% FPI! Remember genomic EPD's are much more reliable predicting traits than individual weights. Lots of power in blood.

Lot 63 GRU MR KINGSTON 950M

REG: 1608950 TATTOO: 950M DOB: 2/13/24 %: 50

S A V RAINFALL 6846
KINGSTON 2010K
MS TWISTER 0118H ET

ELEVATE 343E
MS ELEVATE 950G
MS BREAKOUT 630D



BALANCER

CED	BW	WW	YW	MK	TM	REA	MB	FPI	BW	84
10	1.4	89	139	29	74	0.44	0.58	93.7	WW	659

Double Black - Double Polled - 950M is a good looking rascal that is thick and deep sided. 950M ranks in the top 10% of the breed for growth, marbling and FPI! Great looking bull with profit traits.

Lot 64 GRU MR AMERICAN 0921M

REG: 1610035 TATTOO: 0921M DOB: 2/27/24 %: 88

TPG FRONTRUNNER 2510F
ALL AMERICAN J109
F109 ET

EXT GOVERNOR 3N
MS GOVERNOR 921W
MS SPICY DIRECTION 648S



PUREBRED

CED	BW	WW	YW	MK	TM	REA	MB	FPI	BW	66
16	-2.5	69	113	25	59	1.05	0.49	88.39	WW	645

Homo Black - Double Polled - 0921M is out of a great cow family, his dam is 15 year old cow that has stood the test of time. Sired by the Select Sires bull - All American. 0921M is a purebred Gelbvieh bull that ranks in the top 10% of the breed for calving ease, top 35% of the breed for growth and top 5% of the breed for carcass and FPI. Longevity, calving ease with good growth and awesome carcass traits.

Lot 65 GRU MR STUNNER 07M

REG: 1615132 TATTOO: 07M DOB: 3/8/24 %: 52

MUSGRAVE 316 STUNNER
MR STUNNER 995G ET
MS BLACK CROSS 6044

EARLY ENCOUNTER 536E
MS ENCOUNTER 07H
MS BREAKOUT 736E



BALANCER

CED	BW	WW	YW	MK	TM	REA	MB	FPI	BW	85
12	-0.1	77	132	33	72	0.40	0.45	87.53	WW	659

Double Black - Double Polled - 07M is a long bodied, deep ribbed, thick made bull. 07M dam is a top producer averaging 106 Weaning ratio on 3 calves. 07M ranks in the top 20% of the breed for growth traits, and top 25% of the breed for carcass and FPI. The Stunner x Early Encounter pedigree has worked great at GBB.

Lot 66 GRU MR KINGSTON 272M

REG: 1610071 TATTOO: 272M DOB: 2/3/24 %: 50

S A V RAINFALL 6846
KINGSTON 2010K
MS TWISTER 0118H ET

BIEBER CL ENERGIZE F121
MS KANSAS 272K
HILLE C272



BALANCER

CED	BW	WW	YW	MK	TM	REA	MB	FPI	BW	79
12	-0.3	80	127	32	72	0.26	0.53	89.84	WW	639

Black - Double Polled - 272M is a nice balanced bull raised by a 1st calf heifer that is a sister to Just N Time. Dam is a red cow out of the great C272 - the granddam of Just N Time. 272M ranks in the top 25% of the breed for growth, carcass and FPI. Great cow family!

Lot 67 GRU MR KINGSTON 970M

REG: 1611751 TATTOO: 970M DOB: 3/6/24 %: 50

S A V RAINFALL 6846
KINGSTON 2010K
MS TWISTER 0118H ET

CRICKET
MS CRICKET 970G
MS CLOVER 570C



BALANCER

CED	BW	WW	YW	MK	TM	REA	MB	FPI	BW	80
12	1.8	85	126	25	67	0.78	0.49	89.27	WW	772

Black - Double Polled - 970M is a man. A very impressive, stout made bull. 970M ranks in the top 20% of the breed for growth and top 25% of the breed for carcass and FPI.

Lot 68 GRU MR ROCK 243M

REG: 1610075 TATTOO: 243M DOB: 2/1/24 %: 54

LAZY TV ROCK G501
MR ROCK 1322J
MS 710E 907G

GUNFIGHT 402G
MS GUNFIGHT 253K
MS ENCOUNTER 071H



BALANCER

CED	BW	WW	YW	MK	TM	REA	MB	FPI	BW	61
19	-2.2	79	121	26	66	0.96	0.48	93.58	WW	635

Double Black - Double Polled - 243M is an exciting bull that brings a lot of cool traits to the table. Heifer bull prospect - 243M ranks in the top 10% of the breed for calving ease and FPI along with being in the top 25% of the breed for growth and marbling traits. Twin - raised by a 1st calf heifer.

Lot 69 GRU MR ROCK 253M

REG: 1610679 TATTOO: 253M DOB: 2/1/24 %: 54

LAZY TV ROCK G501
MR ROCK 1322J
MS 710E 907G

GGP



GUNFIGHT 402G
MS GUNFIGHT 253K
MS ENCOUNTER 071H

BALANCER

CED	BW	WW	YW	MK	TM	REA	MB	FPI	BW
15	0.2	83	133	26	68	1.06	0.33	89.42	69
									WW 655

Homo Black - Double Polled - 253M is stout, thick made bull that has calving ease and a lot of growth predictions in his EPD's. 253M ranks in the top 25% of the breed for calving ease, top 15% of the breed for growth traits, top 25% in FPI. Full Brother to Lot 68 - twin bull calves - raised by 1st calf heifer.

Lot 70 GRU MR KINGSTON 944M

REG: 1607981 TATTOO: 944M DOB: 2/21/24 %: 59

S A V RAINFALL 6846
KINGSTON 2010K
MS TWISTER 0118H ET

GGP

GRU MR BREAKOUT 511B
MS BREAKOUT 944G
MS SAM 534C

BALANCER

CED	BW	WW	YW	MK	TM	REA	MB	FPI	BW
9	2.6	91	142	32	77	0.57	0.32	87.83	87
									WW 836

Black - Double Polled - Scurred - 944M is quite a guy! Big, stout, long bodied, and thick made describe this bull. 944M sported our biggest weaning weight coming off pasture. 944M ranks in the top 10% of the breed for growth and top 30% of the breed for FPI.

Lot 71 GRU MR JOIN IN 951M

REG: 1608326 TATTOO: 951M DOB: 2/26/24 %: 50

KESSLERS COMMODORE 6516
GRU JOIN IN 935J ET
HILLE C272

GGP

CRICKET
MS CRICKET 951G
MS ASTERIOD 611D

BALANCER

CED	BW	WW	YW	MK	TM	REA	MB	FPI	BW
12	1.5	86	144	26	71	0.59	0.41	89.66	85
									WW 692

Red - Double Polled - 951M is a big bull with thickness, depth of body and a good look. 951M ranks in the top 10% of the breed for growth traits, and top 20% of the breed for FPI.

Lot 72 SHGR MR LEBARON 212

REG: 4969730 TATTOO: 212 DOB: 1/22/24 %: 100

WHEEL STARK 67G
SMOKY Y STARK K18
SMOKY Y ERICA 1724E

GGP

MANN RED BOX 55C
HAYN MS SCARLETTE 212
WEBR SCARLETTE 402

RED ANGUS

CED	BW	WW	YW	MK	REA	MB	GM	BW
10	0.2	66	110	26	-0.01	0.51	65	80
								WW 690

212M was raised by a 1st calf heifer and is a larger framed, longer bodied bull. 212M ranks in the top 30% of the breed for marbling and top 25% of the breed for grid merit.

Lot 73 GRU MR KINGSTON 166M Lot 74 GRU MR KINGSTON 995M

REG: 1610065 TATTOO: 166M DOB: 2/7/24 %: 50

S A V RAINFALL 6846
KINGSTON 2010K
MS TWISTER 0118H ET



GGP

TEHAMA BONANZA E410
MS BONANZA 166J
MS PASSION ET

BALANCER

CED	BW	WW	YW	MK	TM	REA	MB	FPI	BW
10	2.9	85	127	25	67	0.72	0.57	89.11	87
									WW 626

Double Black - Double Polled - 166M is a stout, thick made Kingston son. We think you will appreciate the power and growth in the Kingston bulls. 166M ranks in the top 25% of the breed for growth and FPI along with a top 15% ranking in marbling.

REG: 1611639 TATTOO: 995M DOB: 2/16/24 %: 50

S A V RAINFALL 6846
KINGSTON 2010K
MS TWISTER 0118H ET

GGP

43D
MS KICKING 995G
CIRCLE S BARBARA 6416

BALANCER

CED	BW	WW	YW	MK	TM	REA	MB	FPI	BW
11	1.7	82	124	29	70	0.66	0.41	86	85
									WW 694

Double Black - Double Polled - 995M is another thick, stout made Kingston. Ranks in the top 25% of the breed for growth, top 35% of the breed for FPI.

Lot 75 GRU MR ROCK 252M

REG: 1608921 TATTOO: 252M DOB: 2/11/24 %: 50

LAZY TV ROCK G501
MR ROCK 1322J
MS 710E 907G

EARLY ENCOUNTER 536E
MS EXAMPLE 252K
MS BREAKOUT 629D



BALANCER

CED	BW	WW	YW	MK	TM	REA	MB	FPI	BW 74
16	-0.5	81	131	29	70	0.69	0.39	90.8	WW 644

Homo Black - Double Polled - 252M is another solid son of Rock. The Rock bulls have been popular. 252M ranks in the top 15% of the breed for calving ease, top 20% of the breed for growth and FPI.

Lot 76 GRU MR GRAND 735M

REG: 1610670 TATTOO: 735M DOB: 3/3/24 %: 81

TWISTER 451B
GRAND PLAN 744G
MS ELAINE 744E

KING GEORGE 817Y
MS KING 735E
MS STUFF 735T



BALANCER

CED	BW	WW	YW	MK	TM	REA	MB	FPI	BW 86
11	0.7	79	125	28	67	0.9	0.09	78.04	WW 743

Double Black - Double Polled - 735M is big, stout, long bodied and great looking. 735M ranks in the top 25% of the breed for performance! One of the bigger calves we weaned this fall.

Lot 77 GRU MR KINGSTON 2035M ET

REG: 1607978 TATTOO: 2035M DOB: 2/5/24 %: 56

S A V RAINFALL 6846
KINGSTON 2010K
MS TWISTER 0118H ET

LAZY TV SAM U451
GRU MS ANNIE 334A
MISS FIRST LOOK FIONA



BALANCER

CED	BW	WW	YW	MK	TM	REA	MB	FPI	BW 86
12	-0.4	71	102	34	70	0.52	0.45	83.19	WW 663

Homo Black - Homo Polled - 2035M is an embryo calf out one of our top cows. Full brother sells as Lot 60. 2035M is thick, deep ribbed and nice balanced. Ranks in the top 30% of the breed for marbling and milk. Great longevity/maternal traits in this cow family.

Lot 78 GRU MR KINGSTON 330M

REG: 1610648 TATTOO: 330M DOB: 2/12/24 %: 58

S A V RAINFALL 6846
KINGSTON 2010K
MS TWISTER 0118H ET

TENDERLOIN
EGL PHOEBE H330
PHOEBE A189



BALANCER

CED	BW	WW	YW	MK	TM	REA	MB	FPI	BW 87
10	1.2	84	139	18	60	0.64	0.47	88.74	WW 623

Double Black - Double Polled - 330H is a nice balance, thick, stout made bull. Ranks in the top 15% of the breed for growth, top 25% of the breed for FPI.

Lot 79 GRU MR KILLIN IT 972M

REG: 1607982 TATTOO: 972M DOB: 2/27/24 %: 47

BALDRIDGE MOVIN ON G780
KILLIN IT 921K
MS TWISTER 921G

MR EXAMPLE 409E
MS EXAMPLE 972G
MS TOUR 792E



BALANCER

CED	BW	WW	YW	MK	TM	REA	MB	FPI	BW 79
11	0.3	65	97	27	60	0.53	0.47	78.67	WW 689

Homo Black - Double Polled - When you're walking through the bulls, 972M stands out! One of the best looking, best built bulls in the sale with tons of real-world growth. He has caught our eye all summer as one of the best Killin It sons. His post weaning growth has been incredible and looks to carry the carcass data needed to add some extra value!



Volume DISCOUNT

- FIVE BULLS – 5%**
- SIX BULLS – 6%**
- SEVEN BULLS – 7%**
- EIGHT BULLS – 8%**
- NINE+BULLS – 9%**



Lot 80 GRU MR KINGSTON 125M

REG: 1610063 TATTOO: 125M DOB: 2/5/24 %: 56

S A V RAINFALL 6846
KINGSTON 2010K
MS TWISTER 0118H ET



CRICKET
GRU MS JACKIE STYLES 125J
MS MIRANDA 9C17 ET

CED	BW	WW	YW	MK	TM	REA	MB	FPI	BW 88
11	2.1	86	137	28	71	0.51	0.31	85.85	WW 650

Black - Double Polled - 125M has been impressive since birth. Big, stout, rugged, beef bull. 125M is out of a red cow and ranks in the top 15% of the breed for growth and top 35% of the breed for FPI.

BALANCER

Lot 81 GRU MR MOVIN 210M

REG: 1610074 TATTOO: 210M DOB: 2/6/24 %: 44

BALDRIDGE ALTERNATIVE E125
BALDRIDGE MOVIN ON G780
BALDRIDGE ISABEL B061



PRIDE 8388F
MS PRIDE 210K
MS DRY CREEK BO 810F



CED	BW	WW	YW	MK	TM	REA	MB	FPI	BW 83
15	-1.4	66	106	19	52	0.23	0.59	84.77	WW 604

Double Black - Double Polled - 210M is a good looking, thick made calving ease bull. 210M ranks in the top 25% of the breed for calving ease, top 10% of the breed for marbling. Raised by a 1st calf heifer.

BALANCER

Lot 82 4HFF GRU 4GM

REG: 4945028 TATTOO: 4GM DOB: 1/4/24 %: 100

LACY COLLUSION 115F
C-BAR RED BARON 207J
C-BAR LEANNA 8141F



SPUR FRANCHISE OF GARTON
C-BAR STONY 837F
C-BAR MS STONY A302

CED	BW	WW	YW	MK	REA	MB	GM	BW 83
14	-1.2	74	113	28	0.54	0.57	66	WW 813

4GM is a big framed, long bodied bull and is a full brother to Lots 20 and Lot 21. 4GM ranks in the top 15% of the breed for growth, top 10% for grid merit EPD's.

RED ANGUS

Lot 83 GRU MR GAME CHANGER 842M

REG: 5027945 TATTOO: 842M DOB: 2/19/24 %: 100

H2R PROFITBUILDER B403
GMRA GAME CHANGER 8270F
GMRA PRIDSTORM 069



HXC DECLARATION 5504C
GRU MS BLOCKANNA DAKOTA
OVER AH-BLOCKANA 342A

CED	BW	WW	YW	MK	REA	MB	GM	BW 87
8	1.2	80	133	25	0.18	0.53	66	WW 712

842M is a powerful bull with tremendous muscle and depth of rib. 842M ranks in the top 10% of the breed for growth, top 25% of the breed for carcass traits and GM.

RED ANGUS

Lot 84 SHGR MR RANCHERO 271

REG: 4969654 TATTOO: 271 DOB: 1/25/24 %: 100

WHEEL STARK 67G
SMOKY Y STARK K18
 SMOKY Y ERICA 1724E

NIO GREELEY 0076
CALY MS KELLY BETH 271
 CALY MS KELLY ANN 071H



RED ANGUS

CED	BW	WW	YW	MK	REA	MB	GM	BW	WW
11	0.4	80	132	23	-0.01	0.47	41	70	608

271M was raised by a 1st calf heifer and brings some stats for growth and performance. 271M in a nice balanced bull that ranks in the top 10% of the breed for growth EPD's. Our area was like many others - some pastures were extremely dry, and some pastures caught enough rain. GGP - EPD's are the best indicators of all traits.

Lot 85 GRU MR ENCOUNTER 242M

REG: 1608677 TATTOO: 242M DOB: 2/2/24 %: 50

BASIN PAYWEIGHT 1682
EARLY ENCOUNTER 536E
 MS SAM 536C

MR STUNNER 995G ET
MS STUNNER 242K
 GRU MS STOUT 432B



BALANCER

CED	BW	WW	YW	MK	TM	REA	MB	FPI	BW	WW
12	0.3	82	139	31	72	0.68	0.36	88.09	64	601

Double Black - Double Polled - 242M is super nice son of Early Encounter. Raised by a 1st calf heifer in a very dry pasture. 242M has really cranked on the #'s since weaning, 242 is a full brother to Lot 34- twin bull calves. 242M rank in the top 20% of the breed for growth - top 25% of the breed for FPI.

Lot 86 GRU MR STUNNER 887M

REG: 1608323 TATTOO: 887M DOB: 3/20/24 %: 56

MUSGRAVE 316 STUNNER
MR STUNNER 995G ET
 MS BLACK CROSS 6044

GRU MR BREAKOUT 511B
887F
 GRU MS ASTRO 163Y

BALANCER

CED	BW	WW	YW	MK	TM	REA	MB	FPI	BW	WW
11	-0.3	77	125	29	67	0.39	0.33	83.88	80	710

Double Black - Double Polled - 887M is a maternal to our top selling bull in 2023- Kill Shot. 887M is a long bodied, bigger framed bull that ranks in the top 30% of the breed for growth traits and top 45% for FPI.

Half Brother to Lot 86



Lot 87 GRU MR KILLIN IT 973M

REG: 1608951 TATTOO: 973M DOB: 3/19/24 %: 50

BALDRIDGE MOVIN ON G780
KILLIN IT 921K
 MS TWISTER 921G

EMPIRE E062
MS ELEVATE 973G
 MS MORGAN 718T

BALANCER

CED	BW	WW	YW	MK	TM	REA	MB	FPI	BW	WW
12	-0.8	70	112	24	59	0.28	0.5	84.37	78	662

Double Black - Double Polled - 973M is a very good looking son of Killin It. 973M ranks in the top 25% of the breed for marbling and top 40% of the breed for FPI.



Lot 88 GRU MR JAGGER 303M

REG: 1610647 TATTOO: 303M DOB: 3/4/24 %: 51

S A V RAINFALL 6846
KINGSTON 2010K
 MS TWISTER 0118H ET



TENDERLOIN
EGL PEARL H303
 EGL PEARL F265

BALANCER

CED	BW	WW	YW	MK	TM	REA	MB	FPI	BW 85
11	0.5	80	135	25	64	0.74	0.33	84.01	WW 650

Double Black - Double Polled - 303M is a very nice balanced, thick made bull sired Kingston. 303M ranks in the top 25% of the breed for growth traits and top 40% of the breed for FPI.

Lot 89 GRU MR WHIRL 2032M

REG: 1610677 TATTOO: 2032M DOB: 2/14/24 %: 50

WHIRLWIND 735E
LAZY TV WHIRLWIND J684
 LAZY TV MS BOULDER G288



GRAND PLAN 744G
MS GRAND 2032K
 GRU MS ELBA 8010



BALANCER

CED	BW	WW	YW	MK	TM	REA	MB	FPI	BW 80
15	-1.6	68	115	27	61	0.5	0.41	83.51	WW 667

Homo Black - Double Polled - 2032M is a nice balanced, long bodied, bigger framed bull. Great Disposition - Calving Ease bull. 2032M ranks in the top 25% of the breed for calving ease, top 40% of the breed for carcass traits.

Lot 90 GRU MR KINGSTON 608M Lot 91 GRU MR GRAND 193M

REG: 1610650 TATTOO: 608M DOB: 3/3/24 %: 50

S A V RAINFALL 6846
KINGSTON 2010K
 MS TWISTER 0118H ET



LSF SAGA 1040Y
MS SAGA 608D
 MS ASTRO



BALANCER

CED	BW	WW	YW	MK	TM	REA	MB	FPI	BW 75
15	-2.1	69	110	29	63	0.26	0.37	82.48	WW 633

Black - Double Polled - 608M is a low birth weight son of Kingston. 608M is a larger, longer bodied bull that will add some stretch to his calves. FPI in the top 50% of the breed.

REG: 1607972 TATTOO: 193M DOB: 3/3/24 %: 73

TWISTER 451B
GRAND PLAN 744G
 MS ELAINE 744E



MR STUNNER 995G ET
MS STUNNER 193J
 MS CRICKET 904G



BALANCER

CED	BW	WW	YW	MK	TM	REA	MB	FPI	BW 72
15	-1.1	73	119	23	59	0.61	0.32	82.79	WW 677

Homo Black - Double Polled - 193M is a great designed bull that is thick and deep ribbed. 193M is a calving ease bull that ranks in the top 25% of the breed. Growth traits are in the top 45% of the breed.

Lot 92 GRU MR KINGSTON 980M Lot 93 GRU MR KINGSTON 848M

REG: 1608328 TATTOO: 980M DOB: 2/18/24 %: 50

S A V RAINFALL 6846
KINGSTON 2010K
 MS TWISTER 0118H ET



CRICKET
MS CRICKET 980G
 MS ABIGAL 802U

BALANCER

CED	BW	WW	YW	MK	TM	REA	MB	FPI	BW 87
11	0.7	73	114	27	64	0.37	0.5	83.6	WW 621

Homo Black - Homo Polled - 980M is a terrific looking bull. Stout, thick and deep sided describe 980M. 980M ranks in the top 50% of the breed for growth traits and top 25% of the breed for carcass traits.

REG: 1608322 TATTOO: 848M DOB: 3/4/24 %: 50

S A V RAINFALL 6846
KINGSTON 2010K
 MS TWISTER 0118H ET



139C
MS SANDHILLS 848F
 MS HOOVER 543C

BALANCER

CED	BW	WW	YW	MK	TM	REA	MB	FPI	BW 88
10	1.5	79	129	26	65	0.54	0.27	80.03	WW 647

Double Black - Double Polled - 848M is a stout, thick made Kingston bull with an outcross pedigree to Early Encounter, Crickett, Grand Plan and etc.. 848M ranks in the top 25% of the breed for growth traits.



LOT 89 is our choice of the Loyal Grund Memorial 4-H Scholarship. 50% of the proceeds on Lot 89 will fund 4-H scholarships for students in Western Kansas, Eastern Colorado. Loyal Grund was proud to live in western Kansas and always supported the 4-H program. Loyal always liked good disposition cattle and Lot 89 was chosen for his great disposition. Loyal truly enjoyed visiting with our bull customers and seeing the genetics advancements made each year. Loyal always said good disposition cattle made the cow business enjoyable. Information on the scholarship can be found at WWW.GRUNDBEEFGENETICS.COM.

Lot 94 GRU MR GRAND 904M

REG: 1608325 TATTOO: 904M DOB: 3/13/24 %: 77

TWISTER 451B
GRAND PLAN 744G
MS ELAINE 744E

CRICKET
MS CRICKET 904G
MS ASTRO



BALANCER

CED	BW	WW	YW	MK	TM	REA	MB	FPI	BW 80
14	-1.6	69	107	22	56	0.6	0.08	73.69	WW 686

Black - Double Polled - 904M is an impressive bull that flat out grew into a man. 904M ranks in the top 35% of the breed for calving ease.

Lot 95 GRU MR ENCOUNTER 346M

REG: 1608313 TATTOO: 346M DOB: 2/20/24 %: 59

BASIN PAYWEIGHT 1682
EARLY ENCOUNTER 536E
MS SAM 536C

SUGAR RAY 229S
MS SUGAR 346A
MS MARY 200M

BALANCER

CED	BW	WW	YW	MK	TM	REA	MB	FPI	BW 89
14	1	62	107	28	59	0.6	0.39	76.52	WW 686

Double Black - Double Polled - 346M is a full brother to many of our top selling bulls in the past 5 years. 346M ranks in the top 35% of the breed for calving ease and comes from a cow family with great longevity. Raised by a 11-year-old cow.

Lot 96 GRU MR KILLIN IT 927M

REG: 1610037 TATTOO: 927M DOB: 3/10/24 %: 50

BALDRIDGE MOVIN ON G780
KILLIN IT 921K
MS TWISTER 921G

EARLY ENCOUNTER 536E
MS EARLY ENCOUNTER ET 927G
MS FORESIGHT 702T



BALANCER

CED	BW	WW	YW	MK	TM	REA	MB	FPI	BW 73
14	-2.3	61	105	30	61	0.34	0.48	81.83	WW 731

Homo Black - Double Polled - 927M is a bull with some size, length of bodied and stretch. 927M ranks in the top 25% of the breed for marbling and top 35% of the breed for calving ease.

**WATCH THE VIDEOS
ON DV AUCTION**



WWW.DVAUCTION.COM

Watch the sale in real time and buy online.

Lot 97 GRU MR JUSTICE 3004M

REG: 21144296 TATTOO: 3004M DOB: 2/8/24 %: 100

BEAR MTN JUSTIFY
BEAR MTN JUSTICE
 BEAR MTN JAMIE 7860

S A V BISMARK 5682
GRU MS BARBARA 3004A
 CIRCLE S BARBARA 6416



Lot 97

ANGUS

CED	BW	WW	YW	MK	REA	MB	\$B	BW 81
11	-0.4	64	112	34	0.66	0.63	150	WW 705

3004M is one of the best bulls of the sale! We don't typically sell a lot of PB Angus bulls, but this was a mating we wanted to be a heifer. Calving ease ranks in the top 15% of the Angus breed and top 40% of breed for \$C. If you need an Angus bull - find this guy.



Lot 98

Lot 98 4HFF GRU D20L

REG: 4945056 TATTOO: D20L DOB: 12/28/23 %: 100

FRITZ JUSTICE 8013
LACY COLLUSION 115F
 LACY LAKOTA 8105

MUSGRAVE AVIATOR
C-BAR LEANNA 8146F
 LASO LEANNA BC114R



GGP

RED ANGUS

CED	BW	WW	YW	MK	REA	MB	GM	BW 83
17	-1.5	70	116	29	0.06	0.33	45	WW 712

D20L is a Black hided/Red Carrier - Angus bull that is very nice balanced, thick and stout. Calving ease bull. D20L ranks in the top 20% of the breed for calving ease and top 25% of the breed for grid merit. Use on Red cows to get red calves or use on black cows to get black calves!

Lot 99 SHGR MR CAMARO 5154 Lot 100 SHGR MR GRAND TORINO 662

REG: 4969664 TATTOO: 5154 DOB: 2/23/24 %: 100

SIX MILE JOHN WICK 882E
NIO GREELEY 0076
 VF LAKOTA C302-0139

BAR M COWBOY CUT 2207
MISS BHR COWBOY 5154
 MISS BHR CUT ABOVE 219

GGP

RED ANGUS

CED	BW	WW	YW	MK	REA	MB	GM	BW 82
9	-1.3	71	105	21	0.49	0.23	43	WW 743

5154M is a long bodied, nice balanced bull that ranks in the top 35% of the breed for weaning EPD.

REG: 4969696 TATTOO: 662 DOB: 2/14/24 %: 100

SIX MILE JOHN WICK 882E
NIO GREELEY 0076
 VF LAKOTA C302-0139

FEDDES OSCAR X28
MS DUBONNET
 MS. ROYAL



GGP

RED ANGUS

CED	BW	WW	YW	MK	REA	MB	GM	BW 67
17	-5.2	62	94	29	0.1	0.58	51	WW 738

662M is a calving ease bull who would work great on heifers. 662M ranks in the top 10% of the breed for calving ease.

Lot 101 4HFF GRU 59M

REG: 4385675 TATTOO: 59 DOB: 1/3/24 %: 38

RED HILL B571 JULIAN 84S
REDHILL 84S JULIAN G658
 RCC MISS WILLOW W24
 SVF AUTHENTIC Z109
B420
 SS/SVF LIL LYNETTE 420Z

SIMMENTAL

CED	BW	WW	YW	MK	REA	MB	API	BW	WW
10	1	68	121	21	0.45	0.26	133.5	83	722

Double Black - Double Polled - 59M is a thick, stout made Sim x Angus bull who has performed well.

Lot 102 GRU MR KINGSTON 842M

REG: 1610673 TATTOO: 842M DOB: 2/27/24 %: 50

S A V RAINFALL 6846
KINGSTON 2010K
 MS TWISTER 0118H ET
 139C
MS SANDHILLS 842F
 GRU MS GOODNIGHT 440B

GGP



BALANCER

CED	BW	WW	YW	MK	TM	REA	MB	FPI	BW	WW
15	-2.5	73	115	26	62	0.39	0.29	82.38	75	616

Double Black - Double Polled - 842M is another great calving ease bull with muscle and thickness. 842M ranks in the top 35% of the breed for calving ease.

Lot 103 GRU MR MOVIN 29M

REG: 1608672 TATTOO: 29M DOB: 2/3/24 %: 25

BALDRIDGE ALTERNATIVE E125
BALDRIDGE MOVIN ON G780
 BALDRIDGE ISABEL B061
 MR STUNNER 995G ET
MS STUNNER 29K
 MS ENCOUNTER 096H



GGP

BALANCER

CED	BW	WW	YW	MK	TM	REA	MB	FPI	BW	WW
13	-1.1	71	117	25	61	0.3	0.84	93.02	73	676

Homo Black - Double Polled - 29M is a super stout bull with a great look. Top 1% of the breed for marbling and top 10% of the breed for FPI.

Lot 104 GRU MR MOVIN 241M

REG: 1611804 TATTOO: 241M DOB: 2/3/24 %: 25

BALDRIDGE ALTERNATIVE E125
BALDRIDGE MOVIN ON G780
 BALDRIDGE ISABEL B061
 MR STUNNER 995G ET
MS STUNNER 29K
 MS ENCOUNTER 096H



GGP



BALANCER

CED	BW	WW	YW	MK	TM	MB	FPI	BW	WW
16	-5.4	63	103	25	57	0.83	93.91	55	635

Homo Black - Double Polled - 241M is a great calving ease/heifer bull to end the sale. Ranks in the top 15% of the breed for calving ease and top 1% of the breed for marbling. Top 10% FPI! Full brother to Lot 103.

Lot 105 GROUP - 5 BRED HEIFERS

Approximately 1150# - Bred to our Calving Ease Herd Sire - Whirlwind - These heifers were preg checked mid - summer and will be calving March 24th to April 10th. We will preg these heifers again before the sale. Heifers have had 2 shots Guardian - Vit A- and Vista VL5. Calves will be 50% Balancer Calves. The resulting calves will qualify for Top Dollar Angus to fit their feeder calf program.



Lot 106 GROUP - 5 BRED HEIFERS



INTRODUCING OUR
herd sires



GRU GRAND PLAN 744G

REG: AMGV1461609 DOB: 2/11/2019

DBRG TWISTER 451
GRU MS ELAINE 744E

CED	BW	WW	YW	MK	TM	REA	MB	FPI
11	1.6	92	146	28	74	0.98	0.21	88.33

- Homo Black - Homo Polled- Purebred Gelbvieh Bull
- Deceased- limited semen
- Ranks in the top 10% of the breed for growth traits and FPI
- Daughters have been outstanding
- Mother is a Dam of Merit
- Average BW - 80# on 100 hd. in 12 different herds

DBRG KINGSTON 2210K

REG: AMGV1544365 DOB: 1/22/2022

SAV RAINFALL 6846
MS TWISTER 0118H ET

CED	BW	WW	YW	MK	TM	REA	MB	FPI
11	0.7	90	147	33	78	0.62	0.53	96.68

- Homo Black - Homo Polled - Balancer
- Highly sough out Balancer bull in 2023
- Top 10% for growth traits and Top 25% for carcass traits
- Out of a Dam of Merit Female
- Genetics designed for cows- av. BW last year was 82 pounds on 80 calves- in two herds

GRU JUST N TIME 714J

REG: AMGV1521176 DOB: 2/18/2021

BIEBER CL ENERGIZE F121
MS COLLEGIAN 714E

CED	BW	WW	YW	MK	TM	REA	MB	FPI
17	-2.8	80	125	33	72	0.47	0.61	97.40

- Homo Polled - Red Balancer
- Calving Ease top 20% of the breed
- Growth and Carcass traits in the top 35% of the breed
- Mother and Grandmother - Dam of Merit females

GRU KILLIN IT 921K

REG: AMGV1551140 DOB: 2/14/2022

BALDRIDGE MOVIN ON G780
MS TWISTER 921G

CED	BW	WW	YW	MK	TM	REA	MB	FPI
10	0.0	72	118	25	62	0.22	0.68	88.38

- Homo Polled - Homo Black Balancer
- Top 5% for carcass traits and Top 40% for growth traits
- Awesome teats, udder, and feet in Dam and Granddam
- Averaged 78 pounds on 50 calves in 2024 - 2 Herds





GRU JOIN IN 935J

REG: AMGV1526407 DOB: 2/11/2019

**KESSLERS COMMODORE 6516
HILLE C272**

CED	BW	WW	YW	MK	TM	REA	MB	FPI
14	-1.2	79	128	32	75	0.38	0.57	93.40

- Black - Homo Polled - Black Balancer
- Elite- Top 20% of breed for growth and carcass traits
- Mother is a Dam of Merit and Grandmother to Just N Time

DBRG MR STUNNER 995G ET

REG: AMGV1453460 DOB: 2/14/2019

**MUSGRAVE 316 STUNNER
DBRG MS BLACK CROSS 6044**

CED	BW	WW	YW	MK	TM	REA	MB	FPI
13	-1.9	70	112	30	65	0.32	0.42	84.47

- Homo Polled - Homo Black Balancer
- Ranks in the top 50% of the breed for growth and carcass traits
- Dam is a Dam of Merit female

GRU HUGO 732H

REG: AMGV1492250 DOB: 2/17/2020

**EARLY ENCOUNTER 536E
MS JOHN 723E**

CED	BW	WW	YW	MK	TM	REA	MB	FPI
16	-1.5	66	116	26	59	0.35	0.66	90.02

- Homo Black - Homo Polled
- Ranks in top 15% of the breed for calving ease and marbling
- Ranks in top 40% of the breed for growth traits

GRU EARLY ENCOUNTER 536E

REG: AMGV1402047 DOB: 2/18/2017

**BASIN PAYWEIGHT 1682
GRU MS SAM 536C**

CED	BW	WW	YW	MK	TM	REA	MB	FPI
17	-1.1	76	143	31	69	0.65	0.52	92.95

- Homo Black - Homo Polled
- Ranks in the top 15% of the breed for calving ease and marbling
- Rank in the top 25% of the breed for growth traits
- Out of a Dam of Merit female

DBRG MR ROCK 1322J

REG: AMGV1514318 DOB: 3/15/2021

LAZY TV ROCK G501
MS 710E 907G

CED	BW	WW	YW	MK	TM	REA	MB	FPI
19	-1.7	80	126	28	68	0.58	0.54	94.63

- Homo Black - Homo Polled Balancer
- Ranks in the top 10% of the breed for calving ease
- Ranks in the top 30% of the breed for growth and carcass traits
- Outstanding phenotype - he needs a picture!

NIO GREELEY 0076

REG: AMAR4370171 DOB: 2/12/2020

SIX MILE JOHN WICK 882E
VF LAKOTA C302-0139

CED	BW	WW	YW	MK	REA	MB	GM
12	-2.3	75	113	22	0.35	0.38	40

- Ranks in the top 30% of breed for growth traits
- Outcross genetics
- Great structure

C-BAR RED BARON 207J

REG: AMAR4534321 DOB: 3/1/2021

LACY COLLUSION 115F
C-BAR LEANNA 8141F

CED	BW	WW	YW	MK	REA	MB	GM
12	0.2	80	122	27	0.35	0.61	70

- Outcross genetics
- Top 20% of breed for growth and carcass traits

KBHR BOLD RULER H152

REG: ASA3789539 DOB: 3/26/2020

WS PROCLAMATION E202
BAR CK X38 106Z

CED	BW	WW	YW	MK	REA	MB	API
16.3	-2.5	81.2	136	24.4	0.57	0.86	192.5

- Homo Black - Homo Polled - PB Simmental
- Outcross genetics
- Top 10% of breed for calving ease
- Top 40% of breed for growth traits





OMF EPIC E27

REG: ASA3317371 DOB: 2/9/2017

WS ALL-AROUND Z35
OMF TIME LESS B100

CED	BW	WW	YW	MK	REA	MB	API
14.9	-1.2	86.7	126	25	0.71	0.21	148.7

- Homo Black - Homo Polled - PB Simmental
- Top 15% for CED and Top 30% for Growth
- Exceptional Phenotype with Calving ease and growth!

SITZ INCENTIVE 704H

REG: AAA19677938 DOB: 1/25/2020

SITZ STELLAR 726D
SITZ BARBARAMERE NELL 53F

CED	BW	WW	YW	MK	REA	MB	\$B
7	0.5	75	124	24	0.51	0.88	156

- Popular Angus AI Sire
- Ranks in the top 35% of the breed for growth and carcass traits
- Cattle with exceptional feet with big time growth and carcass traits!

POSS REMINGTON

REG: AAA20060430 DOB: 1/19/2021

CONNEALY CLARITY
POSS BLUEBLOOD 6502

CED	BW	WW	YW	MK	REA	MB	\$B
9	0.6	87	147	31	0.91	1.12	218

- Popular Angus AI Sire
- Ranks in top 15% of the breed for growth traits and marbling
- Top 3% for Claw

BEAR MTN JUSTICE

REG: AAA1985022 DOB: 2/5/2020

BEAR MTN JUSTIFY
BEAR MTN JAMIE 7860

CED	BW	WW	YW	MK	REA	MB	\$B
10	0.3	85	159	44	1.08	0.91	208

- Popular Angus AI Sire
- Ranks in the top 25% of the breed for calving ease and marbling
- Top 10% for growth traits
- Sires stout, great growth calves!





**UNLOCK
YOUR
HERD'S
POTENTIAL:
VERIFY
YOUR
GENETICS**

BECAUSE YOUR CALVES
GENETICS MATTER.



Learn how Top Dollar
Angus helps qualified
calves earn a \$24/head
Premium on average.

TopDollarAngus.com/EarnMore







GRUND BEEF GENETICS

302 Ash Street
Sharon Springs, KS 67758



ANNUAL BULL SALE
FEBRUARY 26, 2025